



Rabbit anti PLC gamma2 Polyclonal Antibody

Alternative Name(s): Phospholipase C gamma 2; PLCG2;
FCAS3; APLAID; PLC-IV

Order Information

- **Description:** PLC gamma2
- **Catalogue:** 500-12474
- **Lot:** See label
- **Size:** 100ug/200ul
- **Host:** Rabbit
- **Clone:** nan
- **Application:** IHC(P), WB
- **Reactivity:** Hu, Ms, Rt

ANTIGEN PREPARATION

A synthetic peptide of human PLC gamma 2 protein

BACKGROUND

Phosphoinositide-specific phospholipase C (PLC) plays a critical role in the initiation of receptor mediated signal transduction through the generation of the two second messengers, inositol 1,4,5-triphosphate and diacylglycerol from phosphatidylinositol 4,5-bisphosphate. There are many mammalian PLC isozymes, including PLC β 1, PLC β 2, PLC β 3, PLC β 4, PLC γ 1, PLC γ 2, PLC δ 1, PLC δ 2 and PLC ϵ . After stimulation of the collagen receptor glycoprotein VI in human platelets, PLC γ 2 associates with several tyrosine-phosphorylated proteins (Syk, SLP-76, Lyn, linker for activation of T cells (LAT) and the FcR γ chain), which bind to its C-terminal SH2 domain. PLC γ 1 associates with Syk in B cells, but PLC γ 2 does not associate with Syk in platelets. The C-terminal SH2 domain is involved in the regulation of PLC γ 2. In addition, Btk can induce PLC γ 2 tyrosine phosphorylation and initiate calcium mobilization in CD72-stimulated B lymphocytes.

PURIFICATION

The Rabbit IgG is purified by Epitope Affinity Purification

FORMULATION

This affinity purified antibody is supplied in sterile Phosphatebuffered saline (pH7.2) containing antibody stabilizer

SPECIFICITY

This antibody recognizes PLC gamma2 protein. This antibody reacts with human, rat and mouse. The other species are not tested.

STORAGE

The antibodies are stable for 24 months from date of receipt when stored at -20°C to -70°C . The antibodies can be stored at 2°C - 8°C for three month without detectable loss of activity. Avoid repeated freezing-thawing cycles.

APPLICATIONS/SUGGESTED WORKING DILUTIONS*

- Western Blot: 0.1-1 $\mu\text{g}/\text{ml}$
- ELISA: 0.01-0.1 $\mu\text{g}/\text{ml}$
- Immunoprecipitation: 2-5 $\mu\text{g}/\text{ml}$
- IHC: 2-10 $\mu\text{g}/\text{ml}$
- Flow cytometry: Not tested
- Molecular Weight: 150.0
- Positive Control: Kidney Tissue
- Cellular Location: Cell Membrane

FOR RESEARCH USE ONLY.

AbboMax, Inc 2528 Qume Drive, Suite 8, San Jose, California 95131, USA
1 408-573-1898 (Tel). 1 408-573-1858 (Fax). www.abbomax.com info@abbomax.com

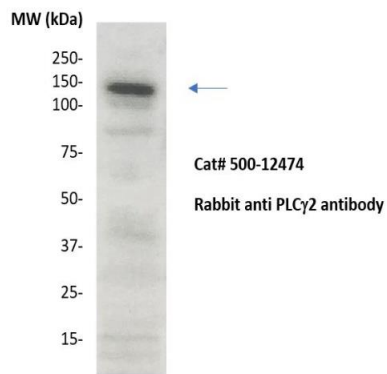


*Optimal dilutions should be determined by researchers for the specific applications.

FOR RESEARCH USE ONLY.

AbboMax, Inc 2528 Qume Drive, Suite 8, San Jose, California 95131, USA
1 408-573-1898 (Tel). 1 408-573-1858 (Fax). www.abbomax.com info@abbomax.com

DATA ATTACHMENTS



Western Blot: The whole lysate derived from Jurkat (20 ug/lane) immunoblotted by Rabbit anti – pPLC-gamma2 (Cat# 500-12474) at 1:500. Observed a major immunoreactive band at molecular weight ~150kDa.

REFERENCES

FOR RESEARCH USE ONLY.